

REAR MANIFOLD UN-02926

REAR STATION KIT UN-06219

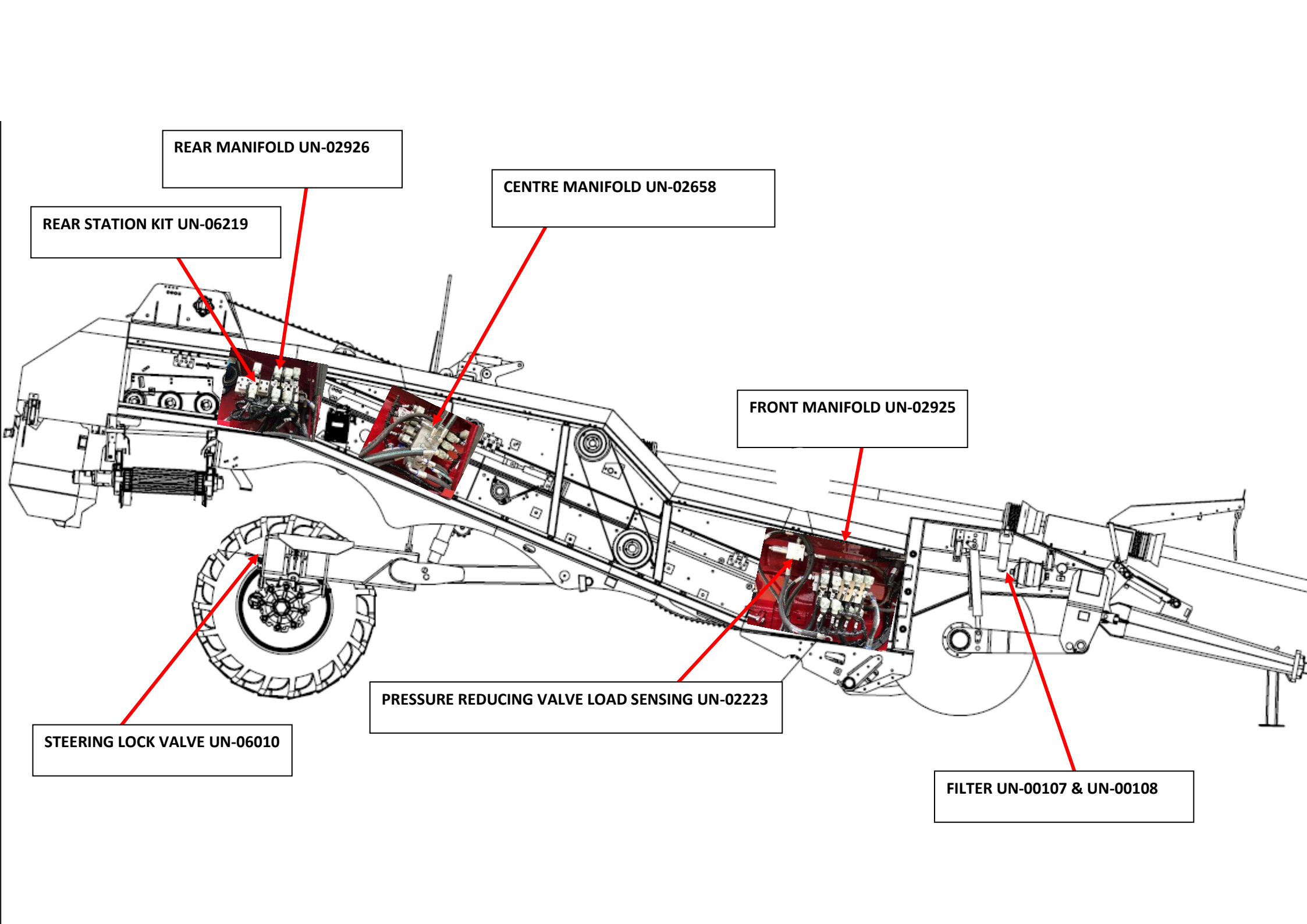
CENTRE MANIFOLD UN-02658

FRONT MANIFOLD UN-02925

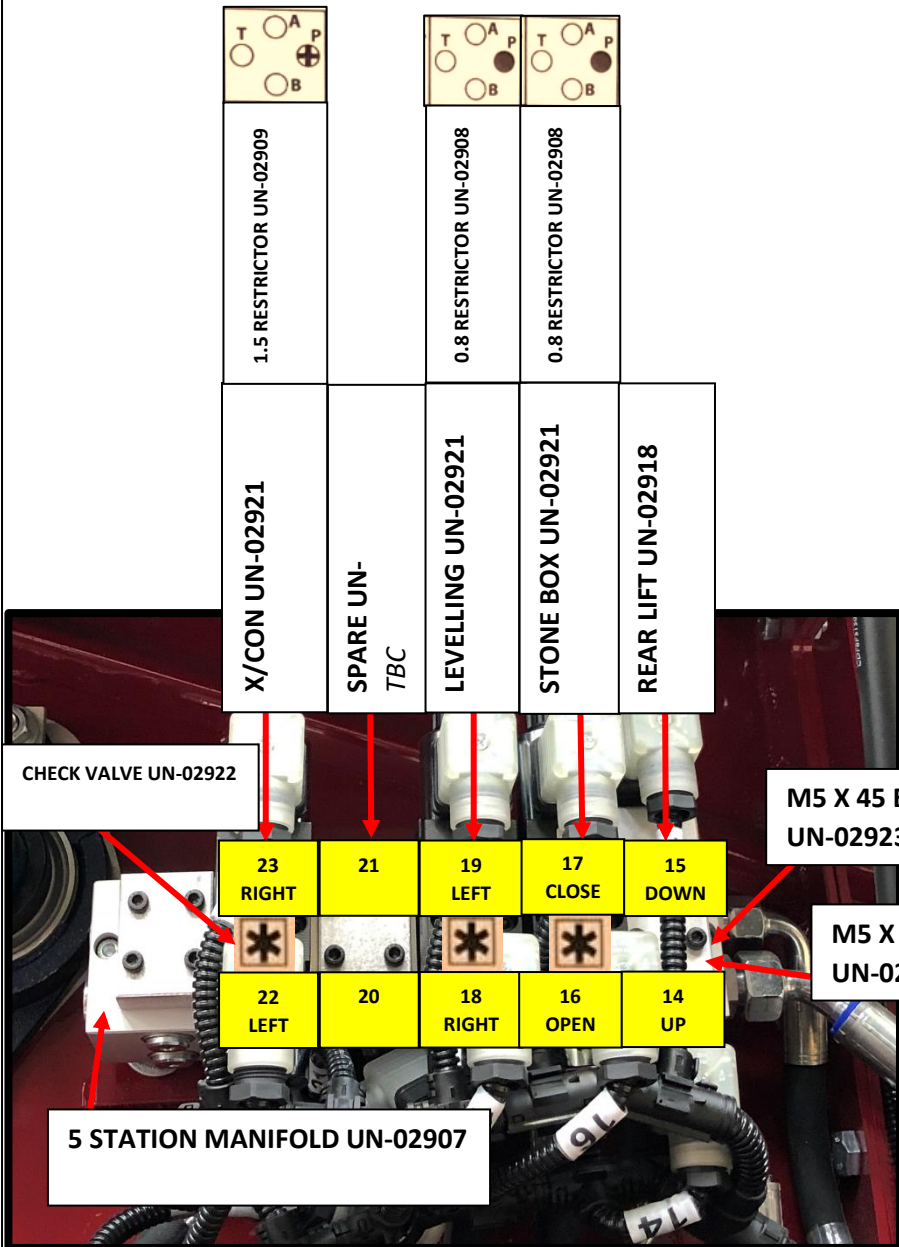
PRESSURE REDUCING VALVE LOAD SENSING UN-02223

STEERING LOCK VALVE UN-06010

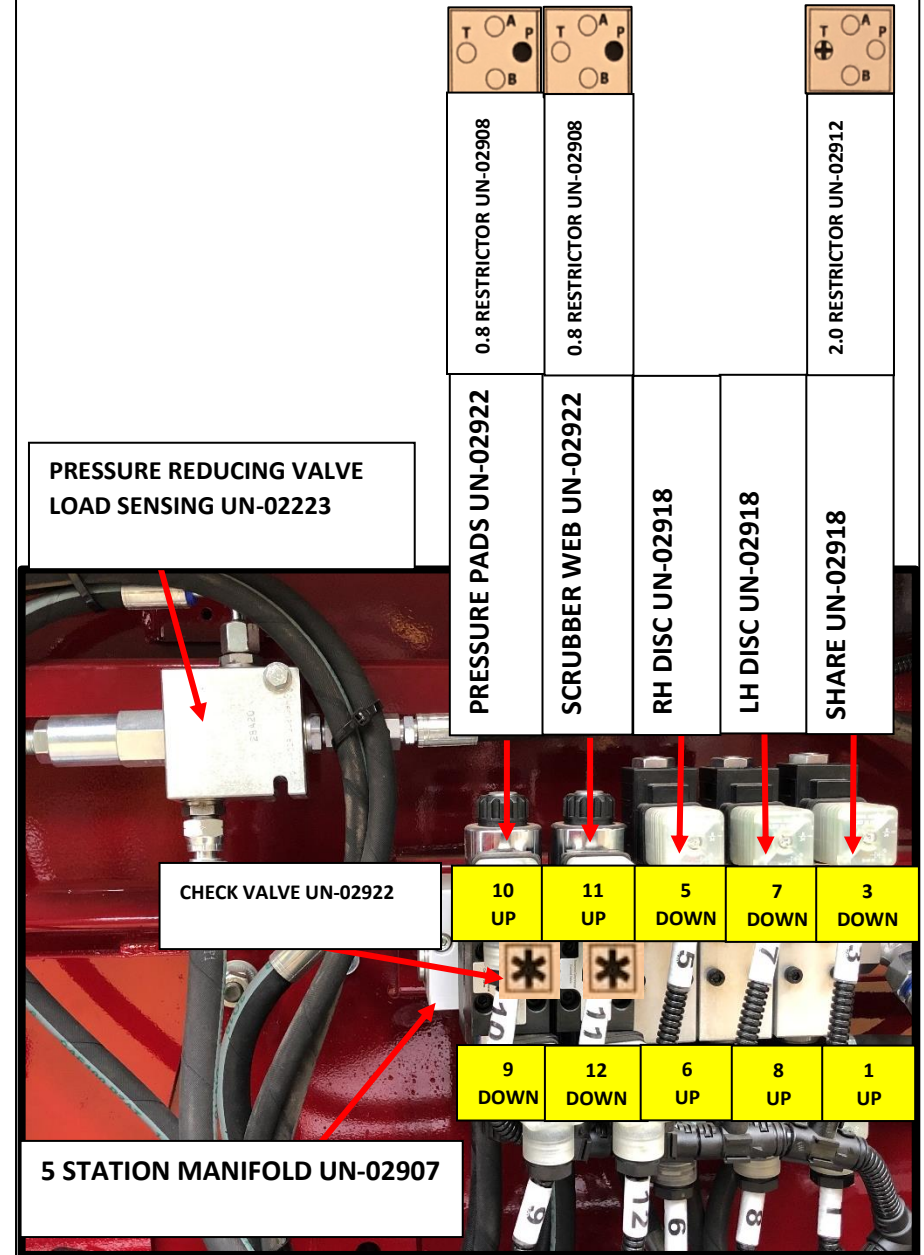
FILTER UN-00107 & UN-00108



REAR MANIFOLD UN-02926



FRONT MANIFOLD UN-02925

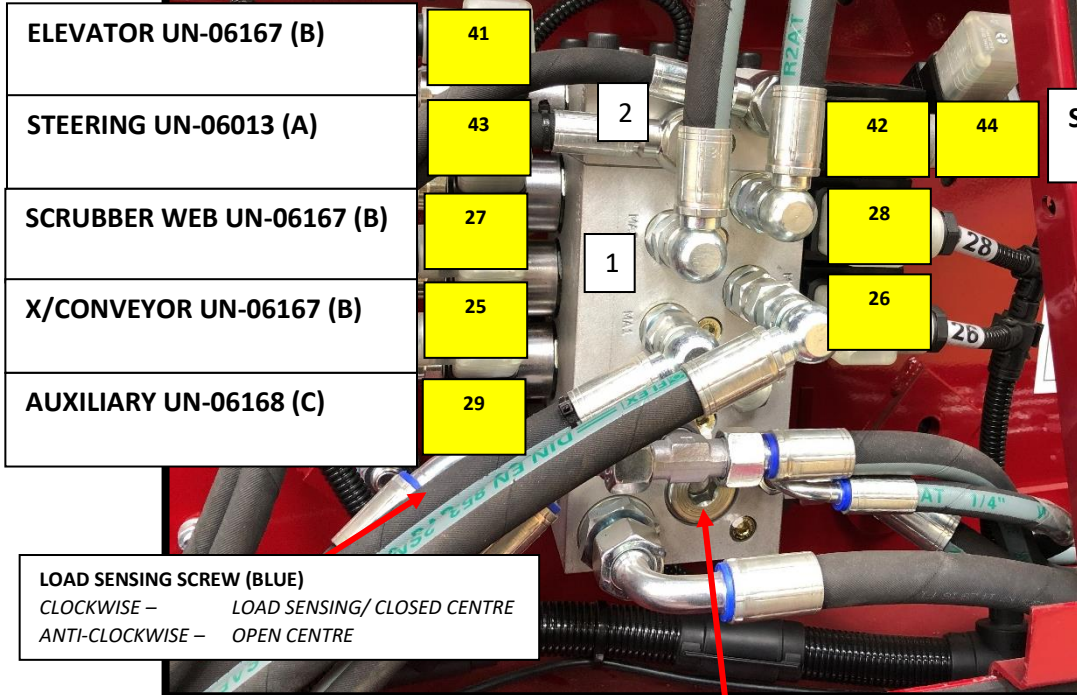


CENTRE MANIFOLD UN-02658

4 Station Proportional Control - Assembly

- 1) 3 Station Proportional Control Assembly
- 2) 1 Station Stackable, Proportional Flow Control Valve & Directional Control Valve Assembly

Important: Torque 45NM



STEERING UN-06130 COIL STEERING SECTION

STEERING UN-06129 VALVE STEERING SECTION

ELEVATOR UN-06167 (B)

41

STEERING UN-06013 (A)

43

2

42

44

SCRUBBER WEB UN-06167 (B)

27

28

X/CONVEYOR UN-06167 (B)

25

26

AUXILIARY UN-06168 (C)

29

1

LOAD SENSING SCREW (BLUE)
CLOCKWISE – LOAD SENSING/ CLOSED CENTRE
ANTI-CLOCKWISE – OPEN CENTRE

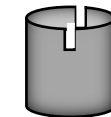
IMPORTANT

THE SLEEVES BEHIND CARTRIDGES **41, 43, 27, 25 & 29** SHOULD HAVE THE FOLLOWING MODIFICATION: 1MM DEEP AND 1MM WIDE. TORQUE 45 WHEN TIGHTENING.

TOOLS REQUIRED:

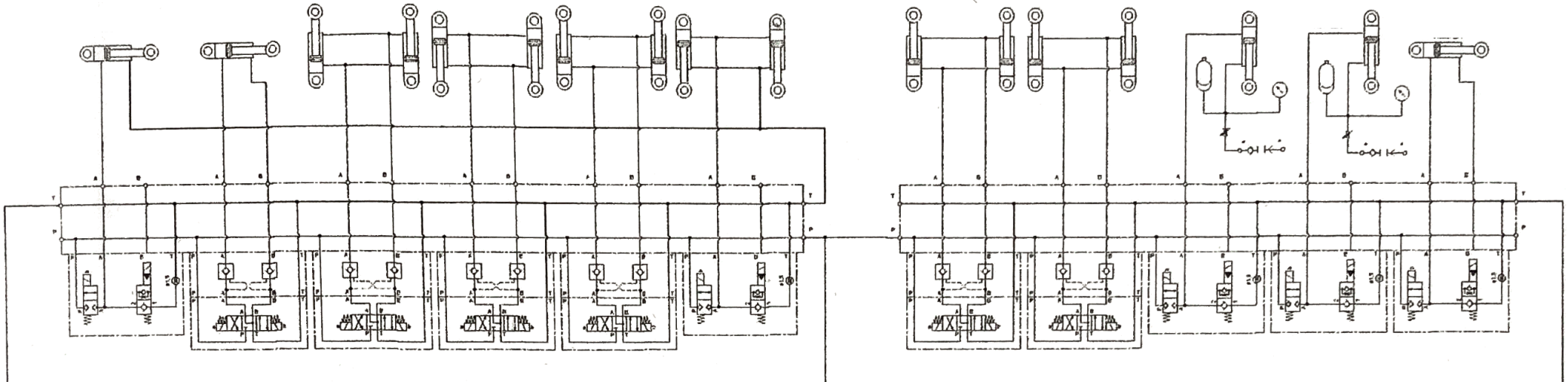
- 1 X JUNIOR HACKSAW
- 1 X 27MM SOCKET (WITH 80MM SPACER)
- 1 X INCH" SOCKET (WITH 80MM SPACER)
- 1 X MAGNET
- 1 X TORQUE WRENCH

**1MM WIDE
1MM DEEP**

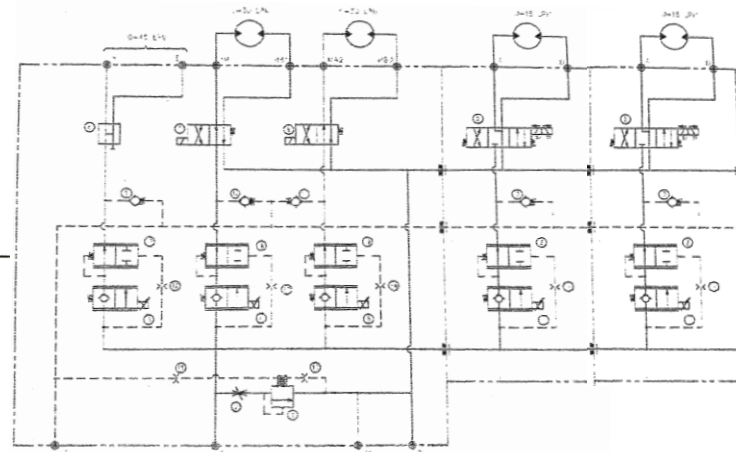


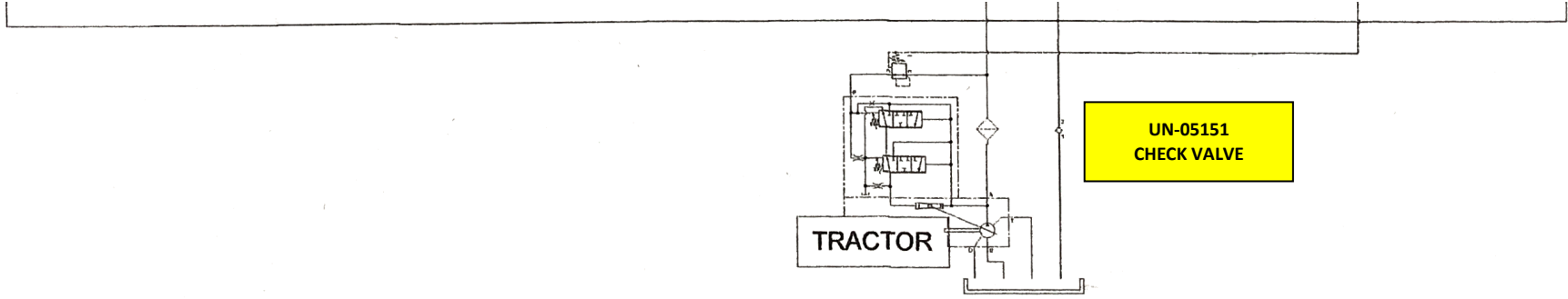
REAR MANIFOLD					
UN-02926					
ELEVATOR SPARE	CROSS CONVEYOR	ELEVATOR SPARE	LEVELLING	STONE BOX	REAR LIFT
UN-???	UN-02921	UN-	UN-02921	UN-02921	UN-02918

FRONT MANIFOLD				
UN-02925				
PRESSURE PADS	SCRUBBER WEB	LEFT DISC	RIGHT DISC	FRONT LIFT
UN-02922	UN-02922	UN-02918	UN-02918	UN-02918



CENTRE MANIFOLD				
UN-02658				
AUXILIARY	CROSS CONVEYOR	SCRUBBER WEB	STEERING	ELEVATOR
UN-06168 C 45L/min	UN-06167 B 30L/min	UN-06167 B 30L/min	UN-06013 A 15L/min	UN-06167 B 30L/min





ELEVATOR HYDRAULIC PARTS

1 x UN-06169 STACKABLE PROPORTIONAL SLICE ASSY 30L
1 x UN-00102 BLANKING PLATE
1 x UN-02922 CHECK VALVE
1 x UN-02736 3 STATION MANIFOLD
1 x UN-02921 CE TOP 2 VALVE
1 x UN-02918 CE TOP 2 VALVE NO RESTRICTOR
2 x UN-05030 3/8" BSP MALE PLUG
4 x UN-05000 1/4 BSP ADAPTOR
3 x UN-05003 1/4" X 3/8" BSP MALE ADAPTOR
3 x UN-05072 1/4" BSP PLUG
3 x UN-05282 3/8" FLAT FACED FEMALE Q/R COUPLING x 3/8" BSP INLET
4 x UN-05080 1/4" BSP BULKHEAD ADAPTOR

ELEVATOR HYDRAULIC HOSES

1 x UN-19639
1 x UN-19638
2 x UN-19637
1 x UN-19640